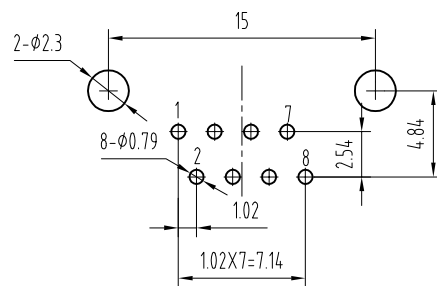
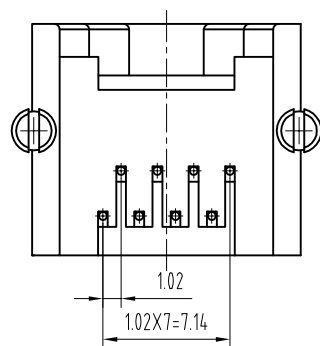
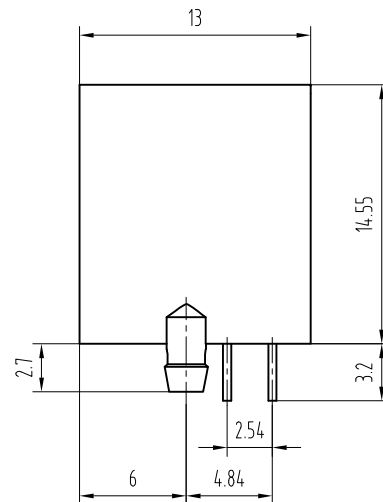
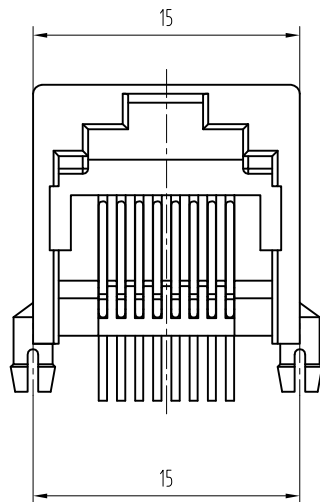


REVISION RECORD				
REV	ECO	DESCRIPTION	DRFT	CHKD



PC Board Layout  
Component Side Shown

NOTES:

MATERIAL :

- 1.HOUSING MATERIAL :GLASS FILLED POLYESTER UL94V-0.
- 2.CONTACT MATERIAL :PHOSPHOR BRONZE  $\phi 0.46\text{mm}$ .
- 3.PLATING :GOLD PLATING OVER NICKEL.

ELECTRICAL:

- 1.VOLTAGE RATING :125 VAC RMS.
- 2.CURRENT RATING :15 AMP.
- 3.CONTACT RESISTANCE :30 MILLIOHMS MAX.
- 4.INSULATION RESISTANCE :500 MEGOHMS MIN @ 500V DC .
- 5.DIELECTRIC WITHSTANDING RESISTANCE :1000V AC RMS 50Hz. 1MIN.

MECHANICAL:

- 1.DURRABILITY :750 CYCLES MIN.
- 2.PCB RETENTION PRE-SOLDER :1 LB MIN.

ENVIRONMENTAL:

- 1. STORAGE : -40°C~+85°C
- 2. OPERATION : 0? TO 70?.

DFTO SHB CHKD LANBO MFO APPVL DATE	DATE	2007.05.03	<h1 style="text-align: center;">Coorle Technology</h1>	
	DATE	2007.05.03		
	DATE			
	DATE			
TOLERANCES EXCEPT AS NOTED MM .0 ± 0.15 .50 ± 0.075 .000 ± 0.05		MATERIAL : QTY : FINISH : SCALE :		TITLE <h2 style="text-align: center;">55 SERIES PCB JACK 8P8C</h2>
ANGLES ± 0.5 		DRAWING NO. TESSA1005 /PART NO.		SIZE A3
THIRD ANGLE PROJECTION		DO NOT SCALE DRAWING		REV 0
		SHEET X OF Y		